

1969 Split-level Chainsaw Retrofit

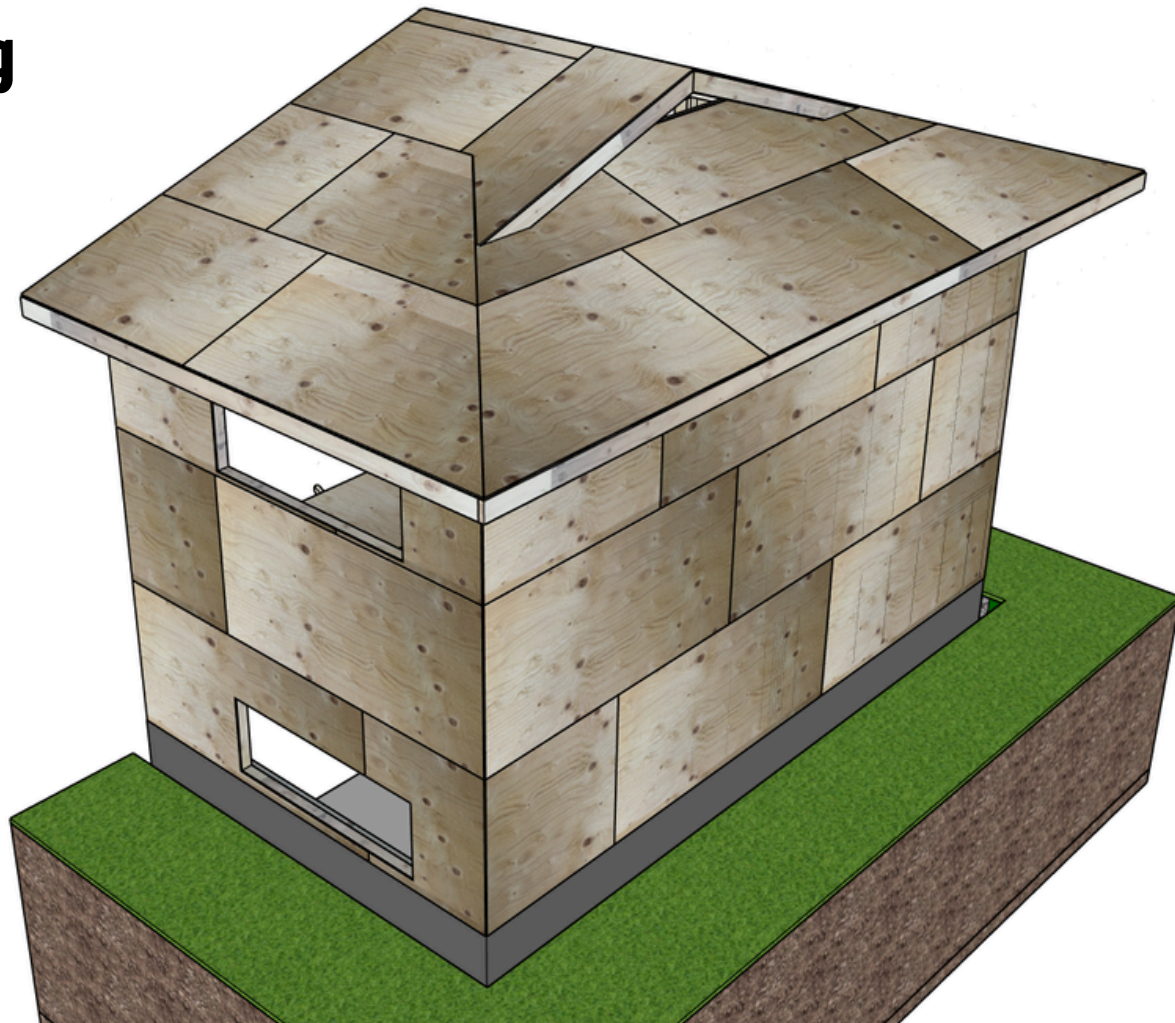
CHAINSAW RETROFIT PROGRESSION

View case study on Retrofitcanada.com

Builder: Solar Homes Inc.



Remove siding



1969 Split-level Chainsaw Retrofit

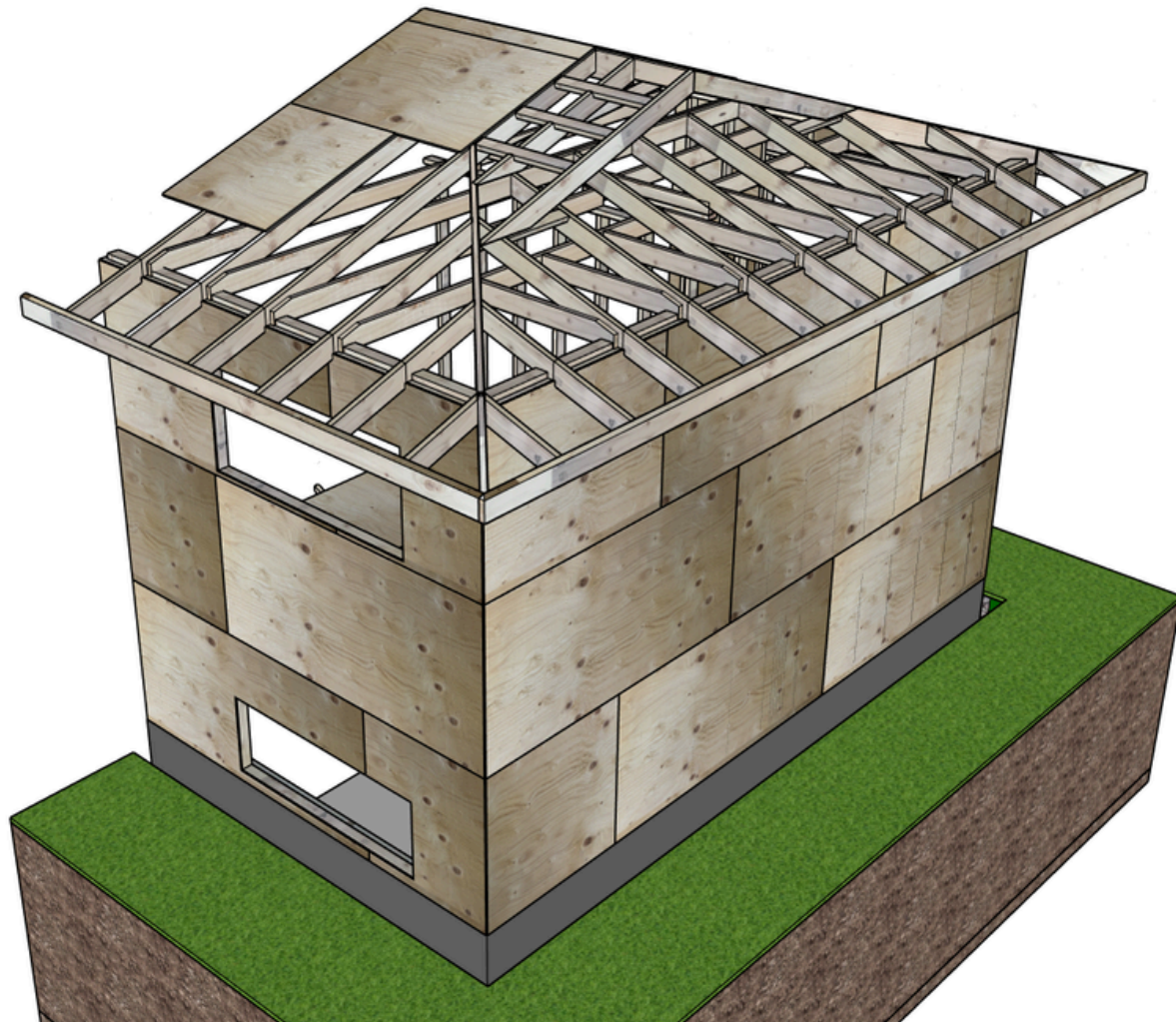
CHAINSAW RETROFIT PROGRESSION

View case study on Retrofitcanada.com

Builder: Solar Homes Inc.



Remove roof sheathing



1969 Split-level Chainsaw Retrofit

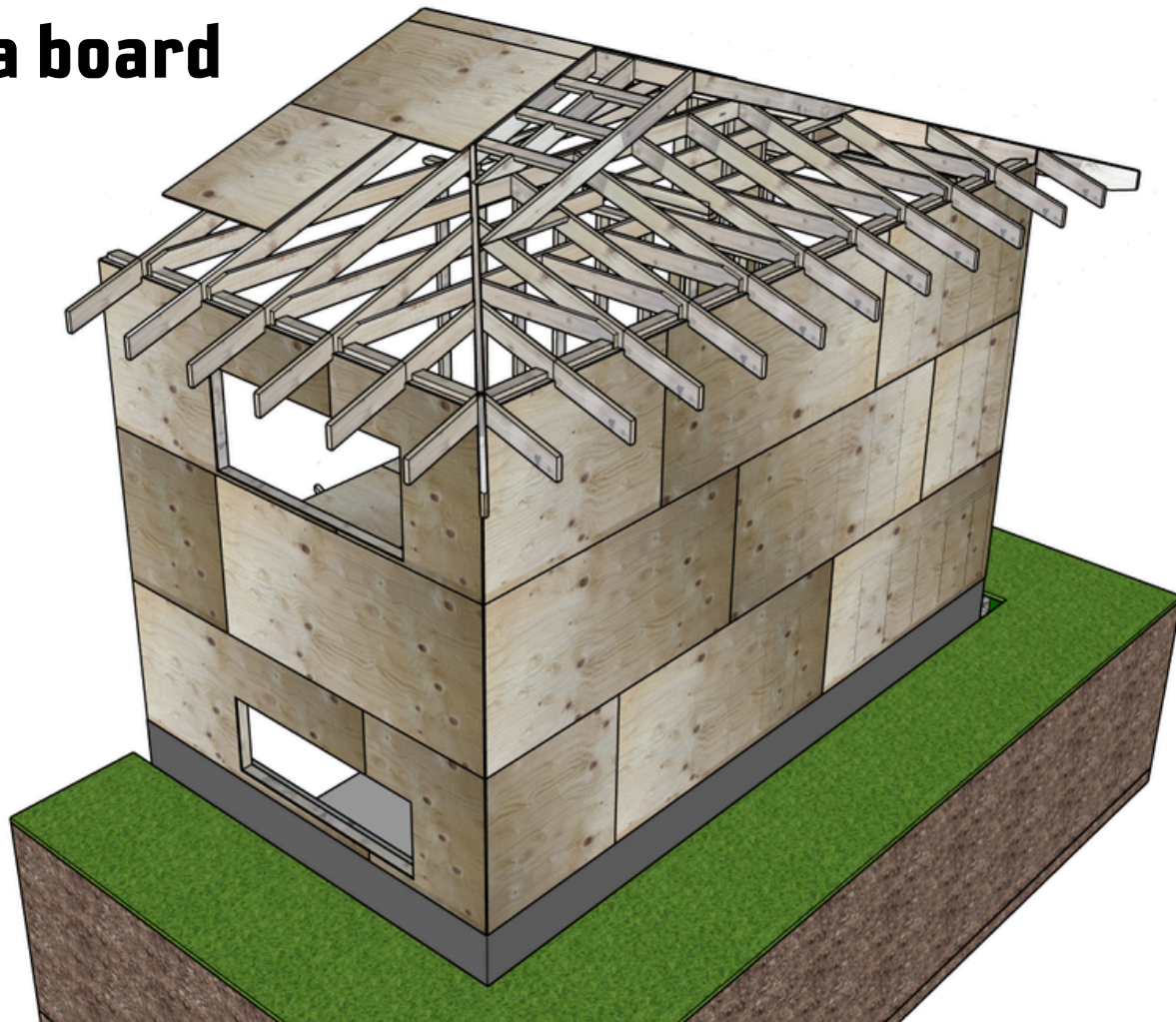
CHAINSAW RETROFIT PROGRESSION

View case study on Retrofitcanada.com

Builder: Solar Homes Inc.



Remove fascia board



1969 Split-level Chainsaw Retrofit

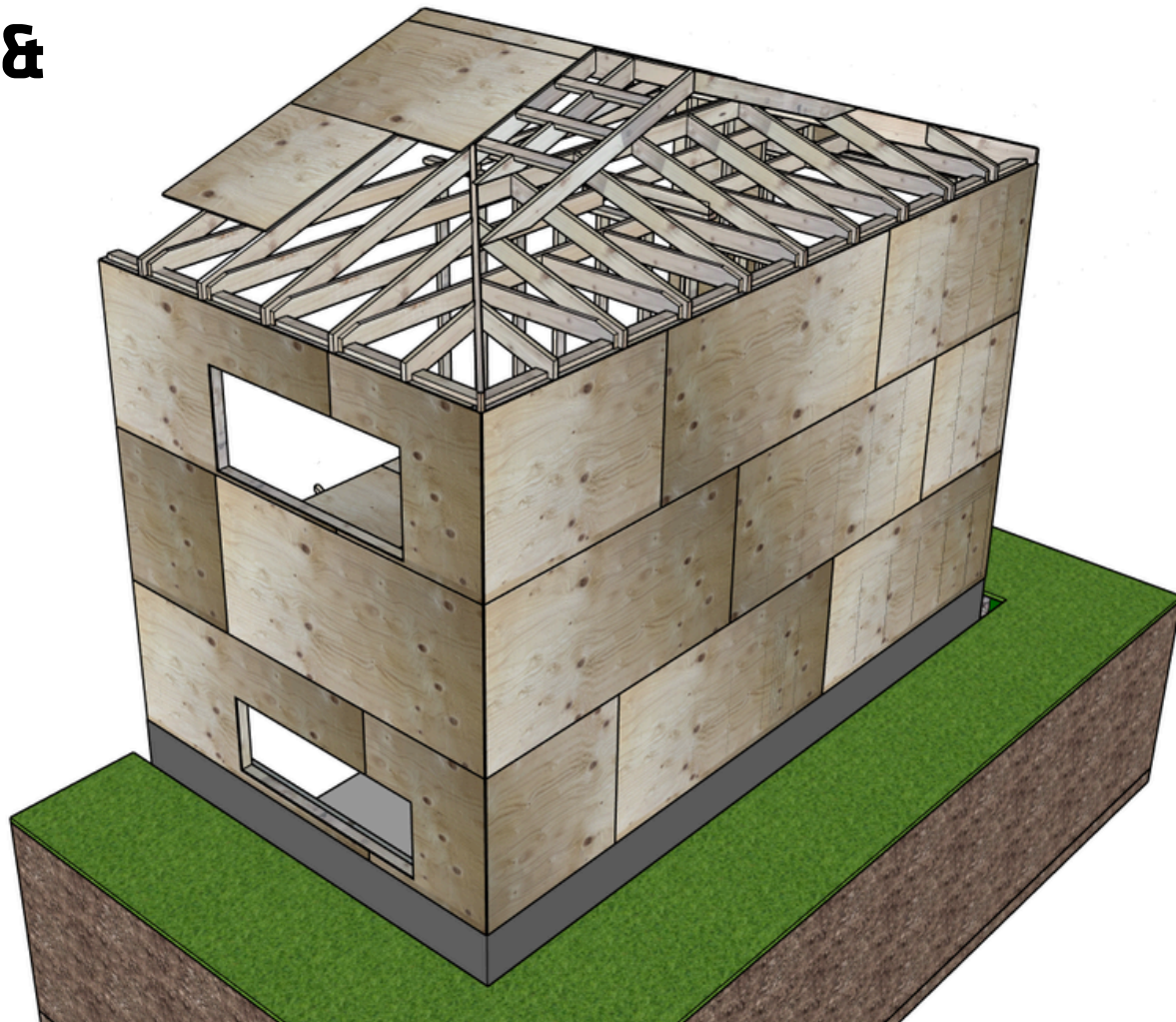
CHAINSAW RETROFIT PROGRESSION

View case study on Retrofitcanada.com

Builder: Solar Homes Inc.



Cut off eaves & rafter tails



1969 Split-level Chainsaw Retrofit

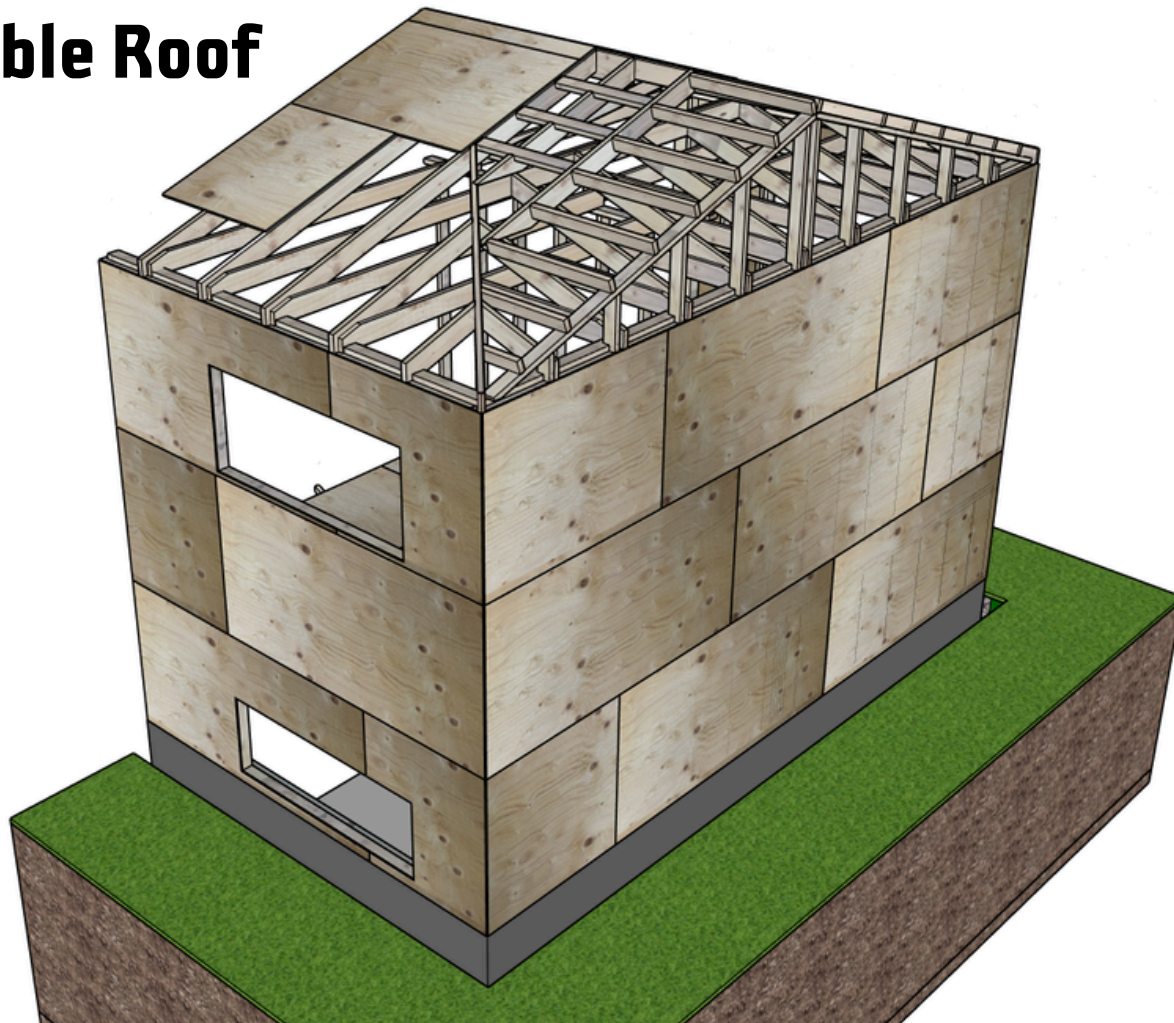
CHAINSAW RETROFIT PROGRESSION

View case study on Retrofitcanada.com

Builder: Solar Homes Inc.



Convert to Gable Roof



1969 Split-level Chainsaw Retrofit

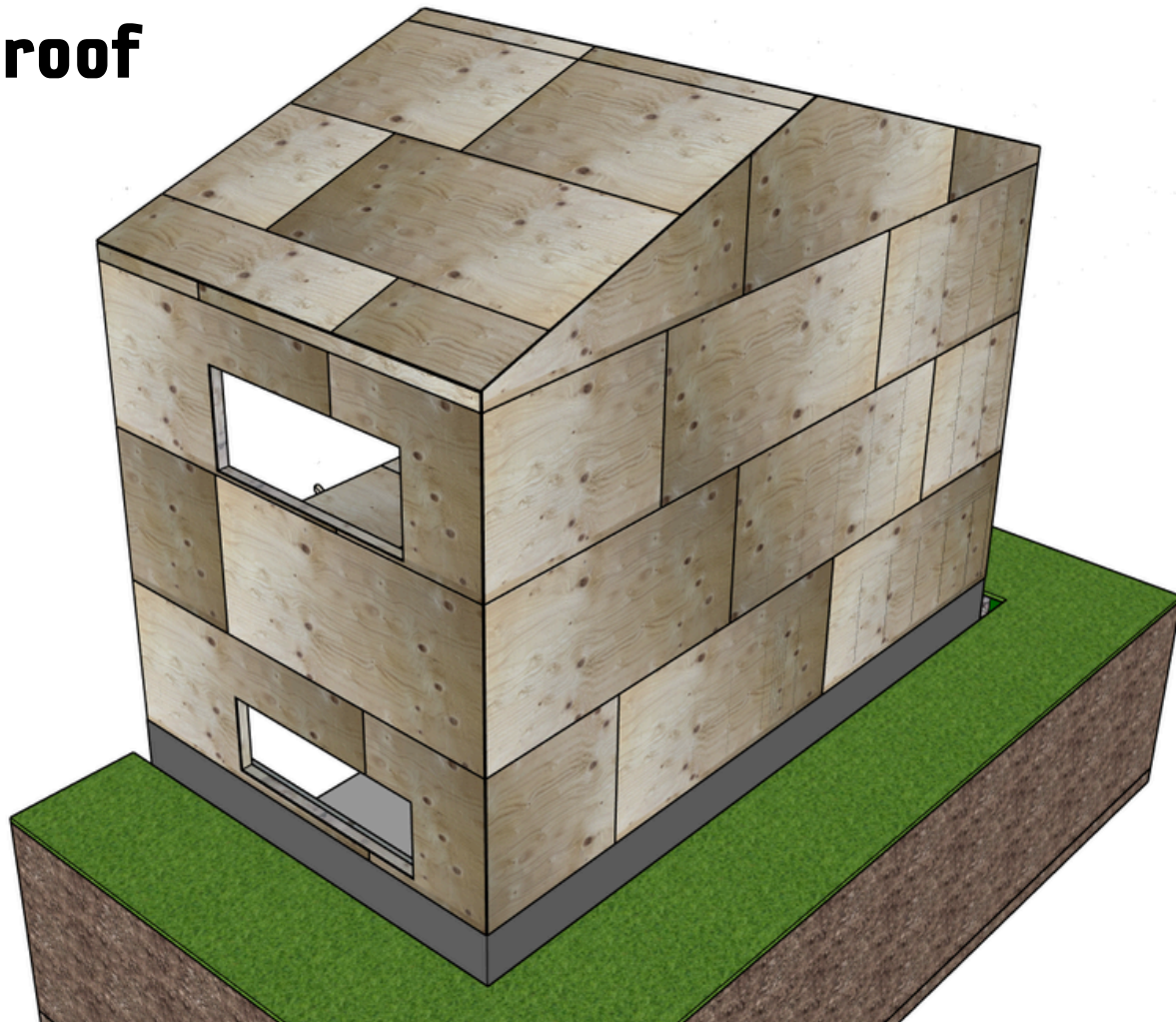
CHAINSAW RETROFIT PROGRESSION

View case study on Retrofitcanada.com

Builder: Solar Homes Inc.



Resheath the roof



1969 Split-level Chainsaw Retrofit

CHAINSAW RETROFIT PROGRESSION

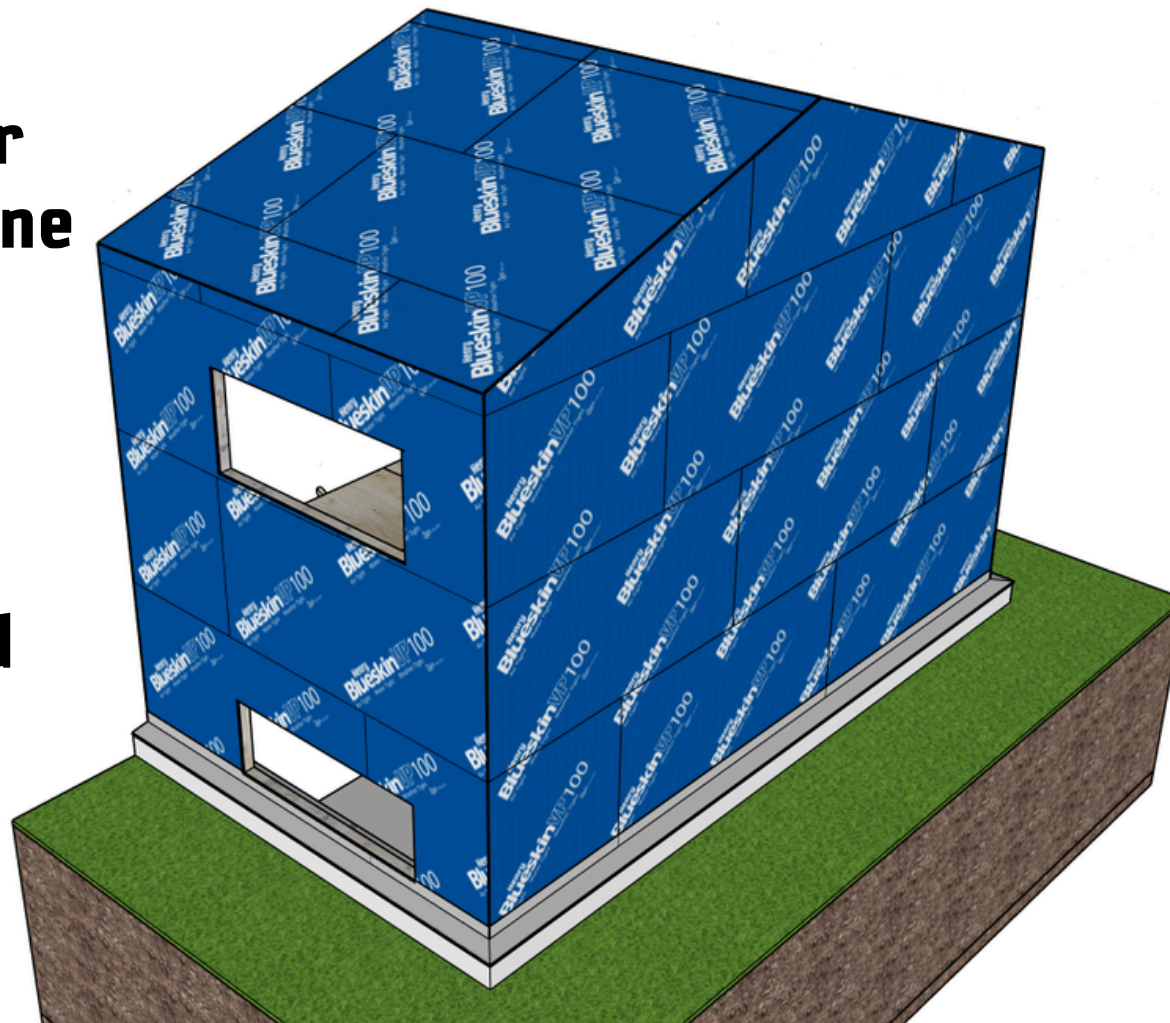
View case study on Retrofitcanada.com

Builder: Solar Homes Inc.



**Install
continuous air
tight membrane
/ WRB**

**Install
foundation
insulation and
flashing**



1969 Split-level Chainsaw Retrofit

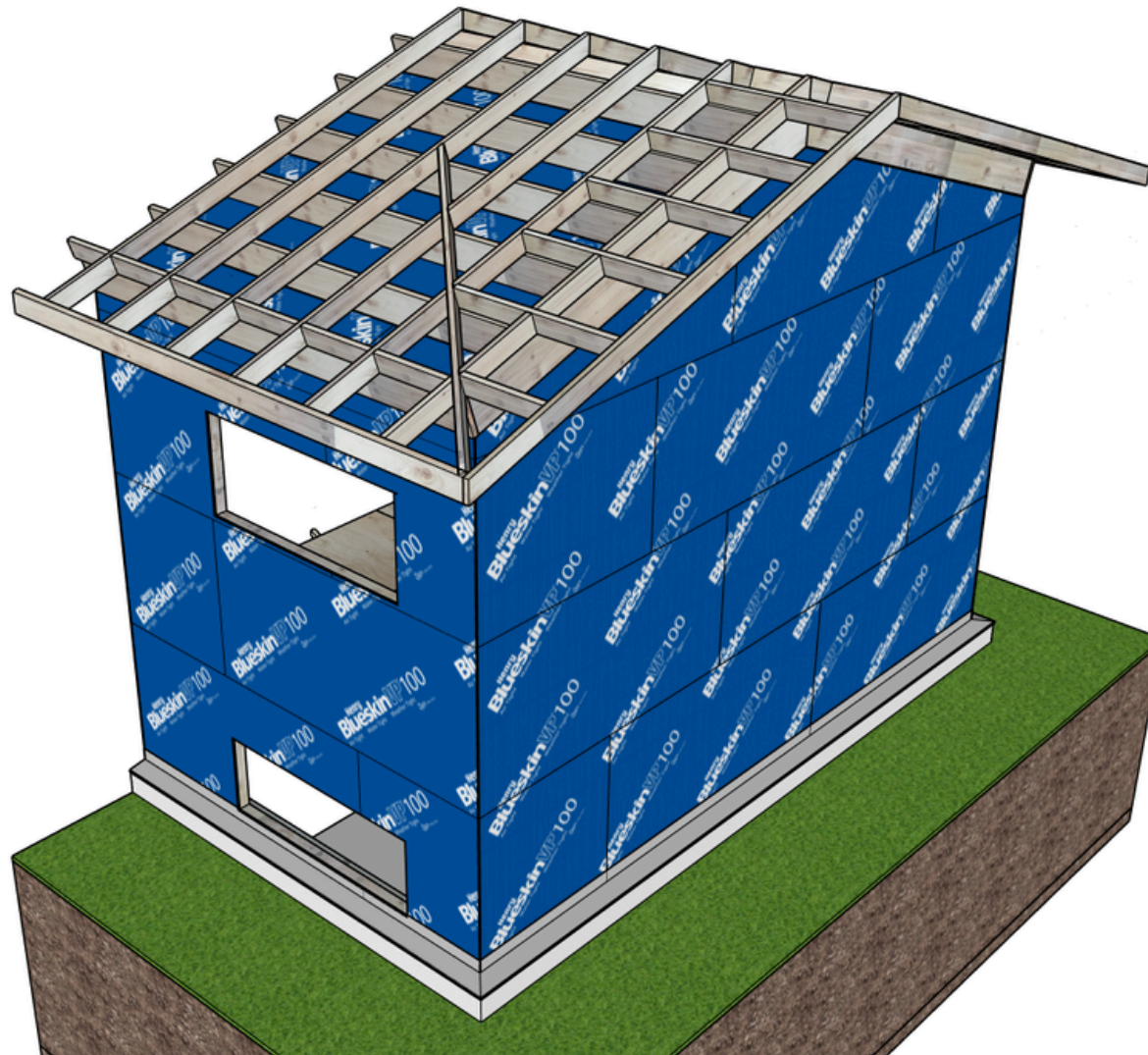
CHAINSAW RETROFIT PROGRESSION

View case study on Retrofitcanada.com

Builder: Solar Homes Inc.



Install new roof frame



1969 Split-level Chainsaw Retrofit

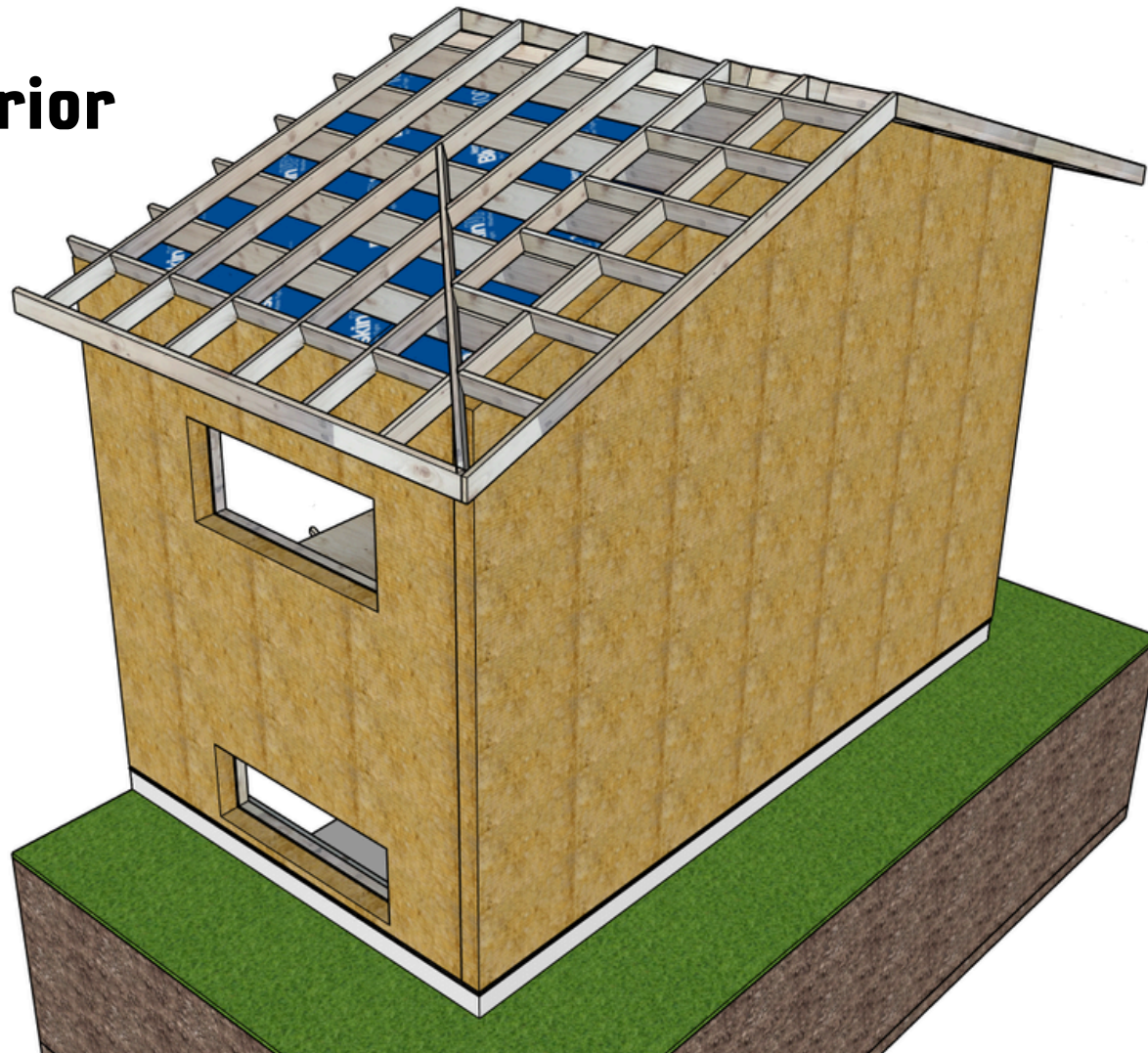
CHAINSAW RETROFIT PROGRESSION

View case study on Retrofitcanada.com

Builder: Solar Homes Inc.



Insulate exterior walls



1969 Split-level Chainsaw Retrofit

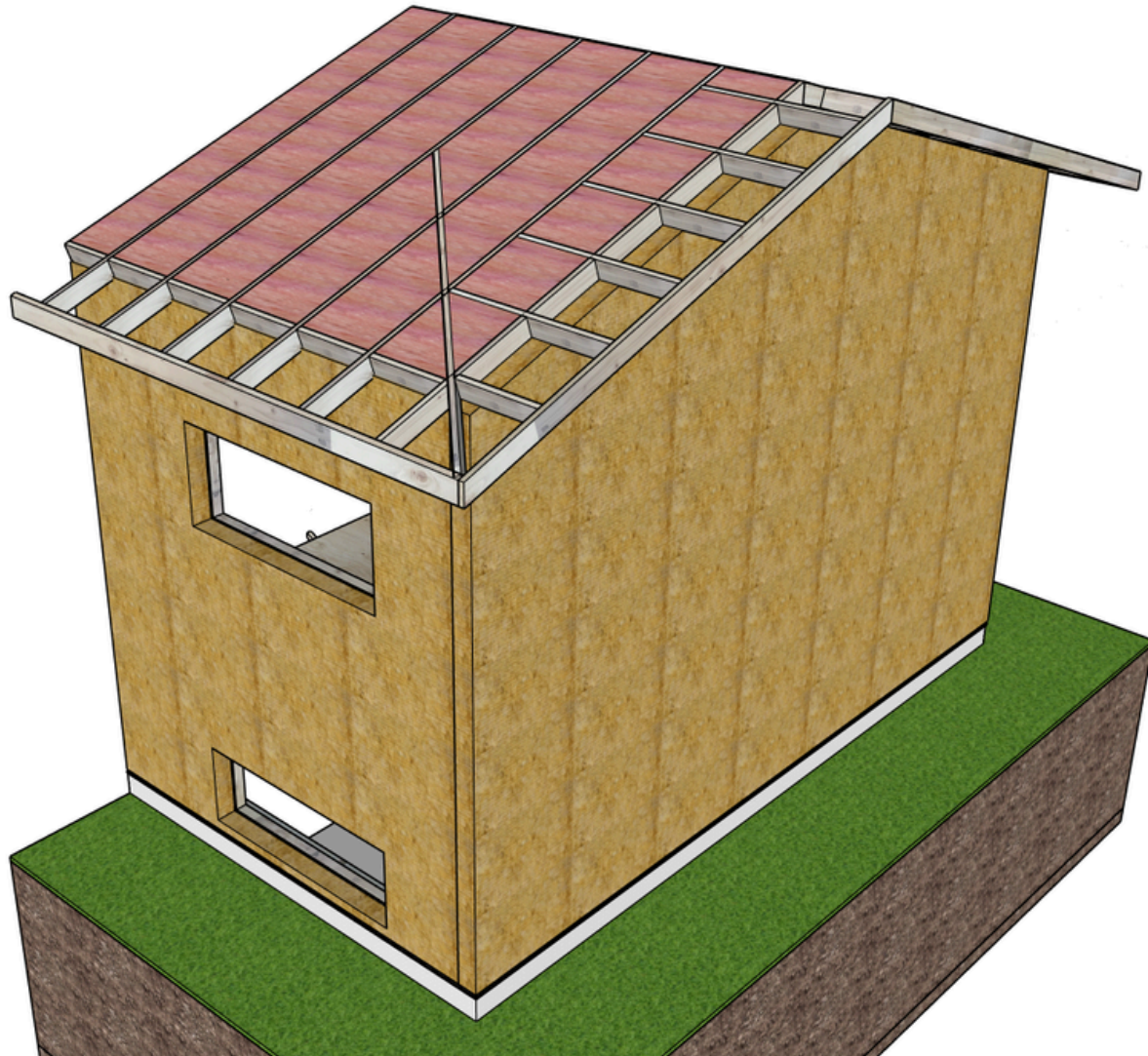
CHAINSAW RETROFIT PROGRESSION

View case study on Retrofitcanada.com

Builder: Solar Homes Inc.



Insulate roof



1969 Split-level Chainsaw Retrofit

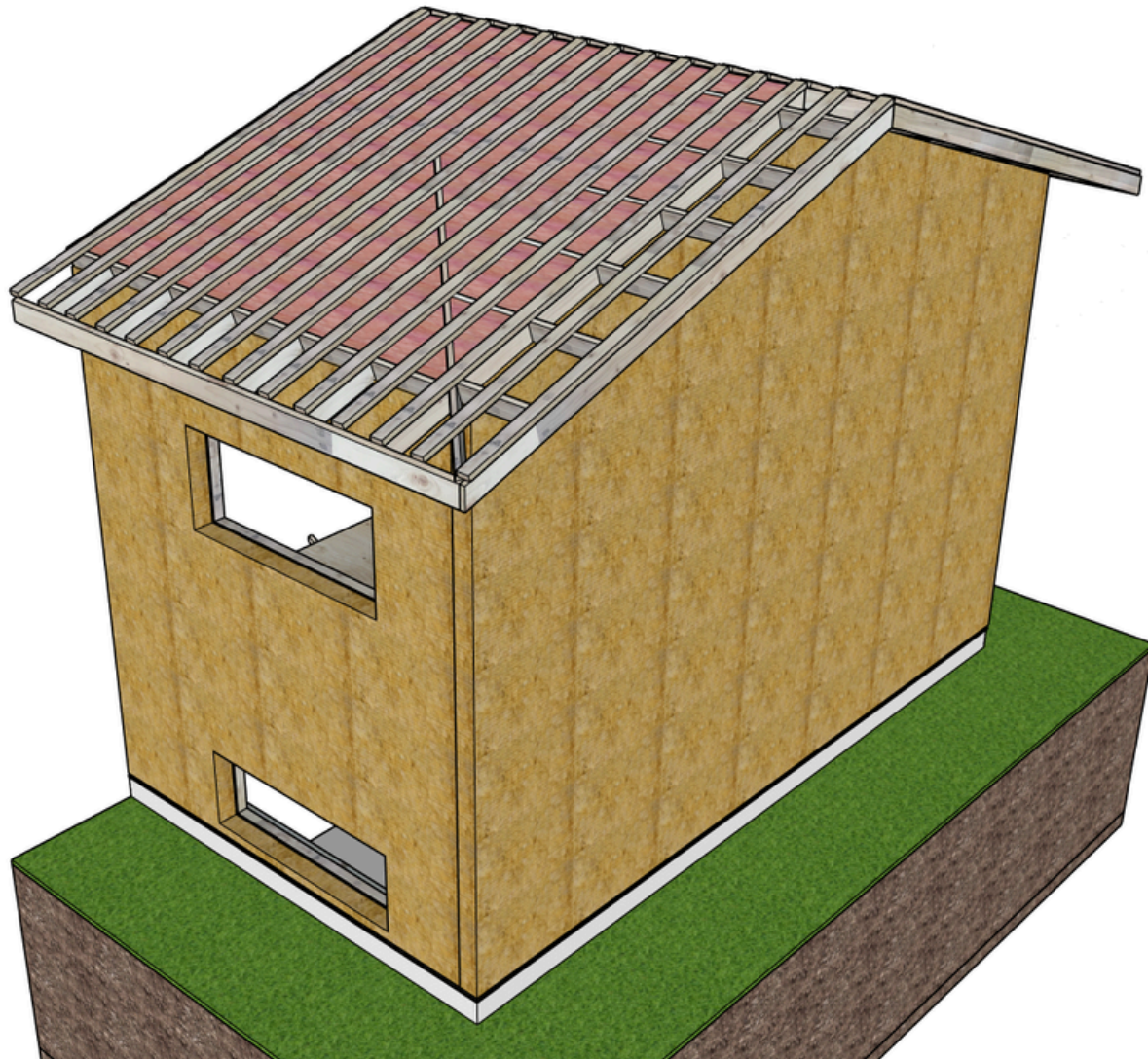
CHAINSAW RETROFIT PROGRESSION

View case study on Retrofitcanada.com

Builder: Solar Homes Inc.



**Add roof and
wall rain
screen / back
venting**



1969 Split-level Chainsaw Retrofit

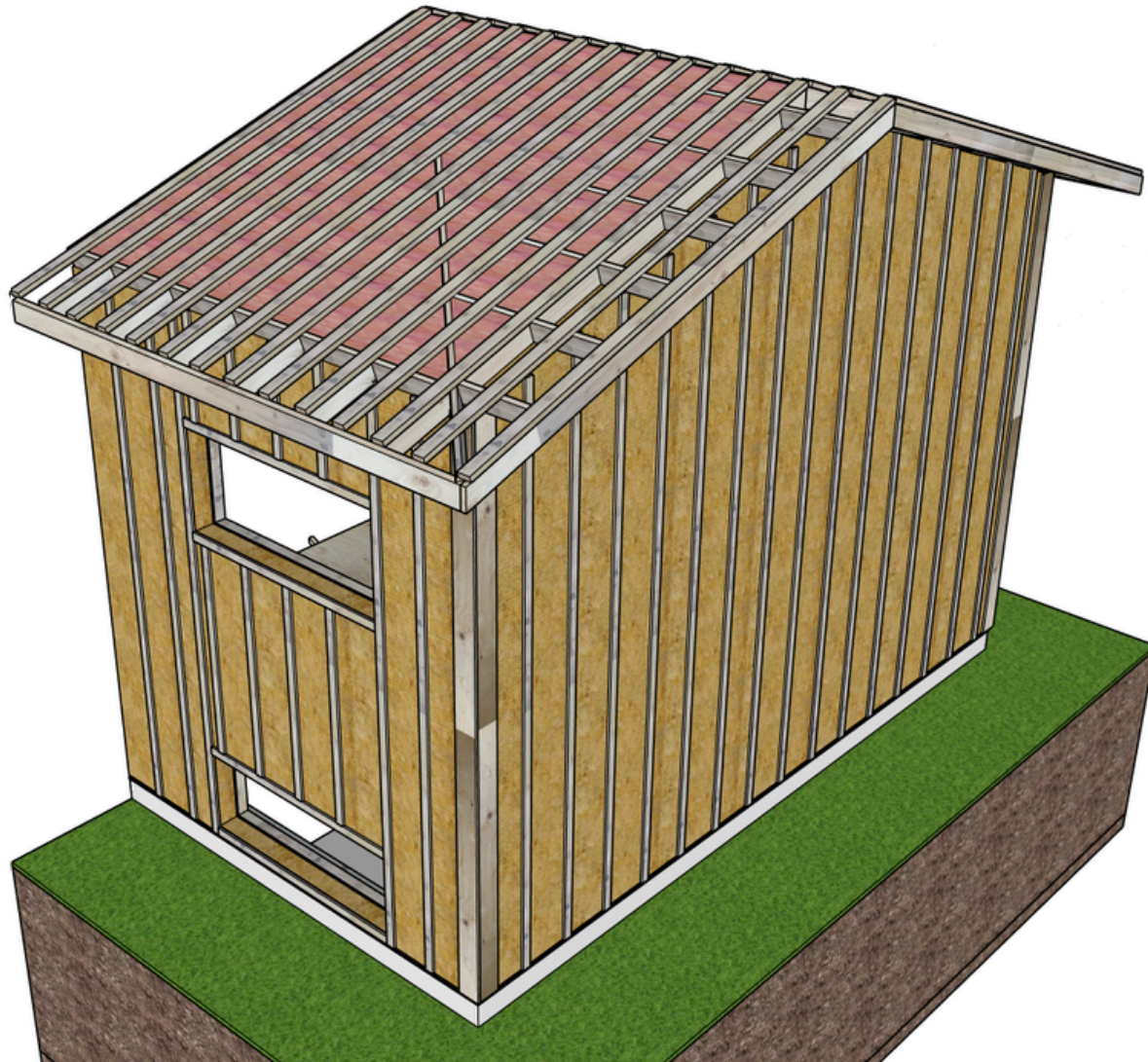
CHAINSAW RETROFIT PROGRESSION

View case study on Retrofitcanada.com

Builder: Solar Homes Inc.



**Add roof and
wall rain
screen / back
venting**



1969 Split-level Chainsaw Retrofit

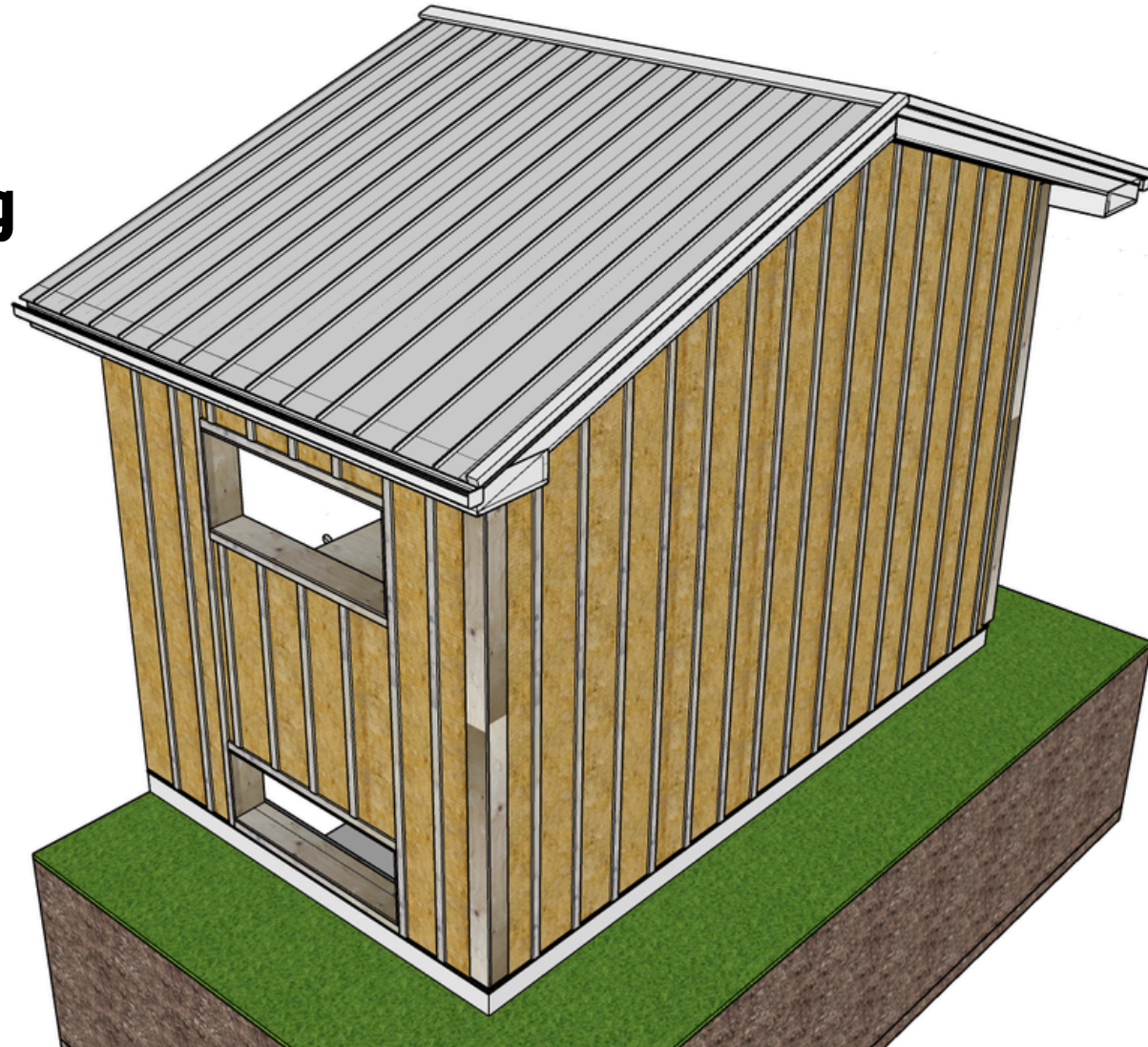
CHAINSAW RETROFIT PROGRESSION

View case study on Retrofitcanada.com

Builder: Solar Homes Inc.



**Install metal
roof, flashing
and trim**



1969 Split-level Chainsaw Retrofit

CHAINSAW RETROFIT PROGRESSION

View case study on Retrofitcanada.com

Builder: Solar Homes Inc.



**Install
windows
and flashing**

**Install
exterior wall
finish and trim**

